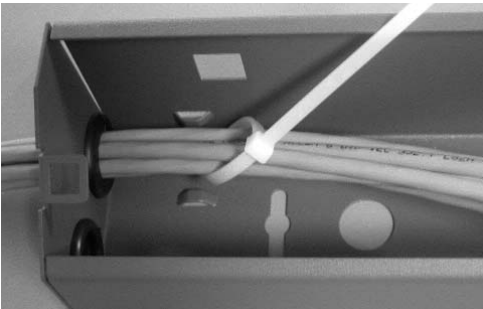


1. Bring cable into enclosure and secure loosely with cable ties

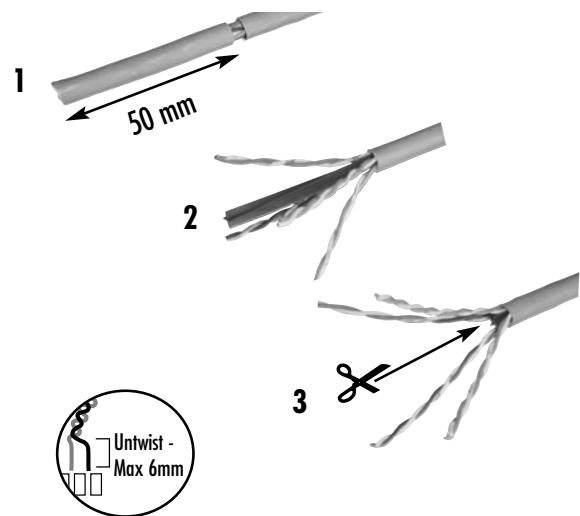


Remove modules from front plate prior to termination and feed cable through the apertures.

2. Termination Tool

IMPORTANT - Termination should be completed using a 110 termination tool, set on low impact.

3. Cable Preparation & Termination



MOLEX PREMISE NETWORKS

**Molex Premise Networks
Corporate Headquarters**
Tel: 1 866 733 6659
www.molexpn.com

**European
Headquarters**
Tel: 44 (0) 1489 572111
www.molexpn.co.uk

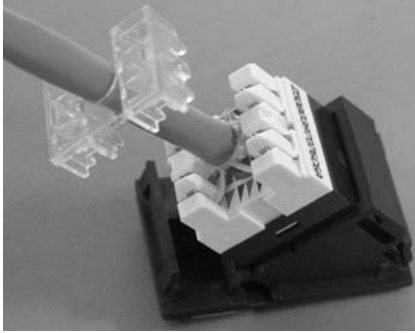
**Pac Rim
Headquarters**
Tel: 61 3 9971 7111
www.molexpn.com.au

**Molex
Incorporated**
Tel: 630 969 4550
www.molex.com

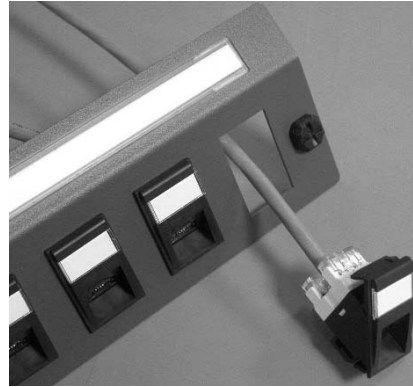


4. Cable Strain Relief

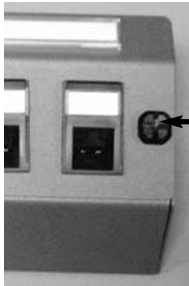
Fit cable strain relief stuffer cap ensuring the "U" shape cut-out follows the direction of the cable.



5. Snap connectors into the plate and dress cable into the base.

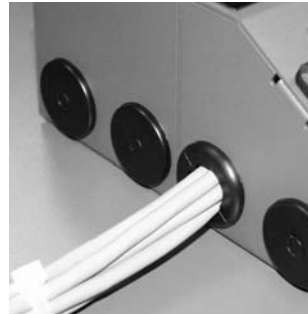


6. Fit Cover.



Locate the snap-fit fasteners, turn through 45° and push firmly until they snap shut.

7. Ensure that the cable is protected by the grommets provided.



MOLEX PREMISE NETWORKS

**Molex Premise Networks
Corporate Headquarters**
Tel: 1 866 733 6659
www.molexpn.com

**European
Headquarters**
Tel: 44 (0) 1489 572111
www.molexpn.co.uk

**Pac Rim
Headquarters**
Tel: 61 3 9971 7111
www.molexpn.com.au

**Molex
Incorporated**
Tel: 630 969 4550
www.molex.com